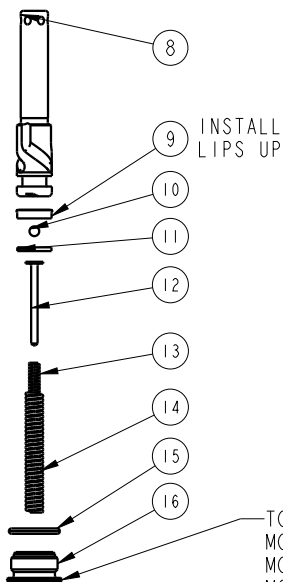
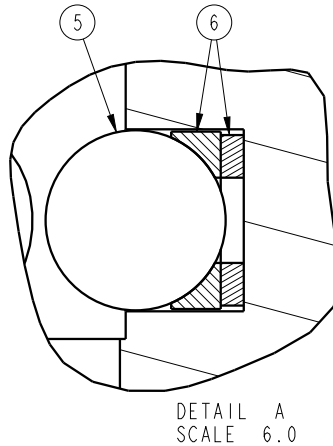
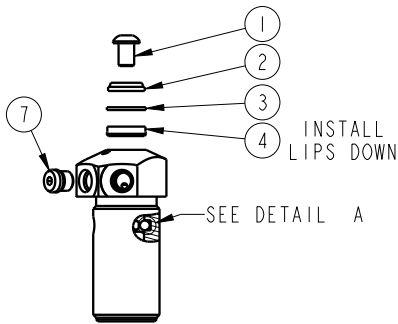


NO.	QTY.	DESCRIPTION	MODEL NUMBER			STANDARD SEAL KIT	FLUOROCARBON SEAL KIT	SPRING KIT
			14-0105-01-X	14-0109-01-X	14-0113-01-X			
1	1	BUTTON HEAD CAP SCREW	21-4110-01	21-4100-09	21-4100-39	NO	NO	NO
2	1	WIPER, ROD (FLUOROCARBON)	39-0530-04	39-0530-01	39-0530-00	YES	YES	NO
3	1	BACK-UP RING, ROD	39-F540-00	39-F540-01	39-F540-02	YES	YES	NO
4	1	SEAL, ROD (STANDARD)	39-0100-38	39-0100-20	39-0110-46	YES	NO	NO
	1	SEAL, ROD (FLUOROCARBON)	39-0520-14	39-V100-20	39-V110-46	NO	YES	NO
5	3	BALL, STEEL ALLOY	23-6000-14	23-6000-11	23-6000-02	YES	YES	NO
6	3	BALL SEAT ASSEMBLY	90-1999-56	90-1999-57	90-1999-58	YES	YES	NO
7	1	BREATHER	91-5900-01	92-0900-01	92-0900-01	NO	NO	NO
8	1	PLUNGER, LEFT HAND (SHOWN)	81-4000-20	81-4000-19	81-4000-21	NO	NO	NO
	1	PLUNGER, RIGHT HAND	81-4000-16	81-4000-17	81-4000-18	NO	NO	NO
	1	PLUNGER, STRAIGHT	81-4000-72	81-4000-73	81-4000-74	NO	NO	NO
9	1	SEAL, PLUNGER (STANDARD)	39-0100-36	39-0100-15	39-0110-27	YES	NO	NO
	1	SEAL, PLUNGER (FLUOROCARBON)	39-0520-10	39-0520-11	39-0520-12	NO	YES	NO
10	1	PIVOT BALL	23-6000-14	23-6000-11	23-6000-02	NO	NO	YES
11	1	PIVOT DISK	N/A	81-5909-01	81-5913-01	NO	NO	YES
12	1	SPRING GUIDE / PIVOT DISK	81-5905-01	N/A	N/A	NO	NO	NO
13	1	INNER SPRING	23-3100-08	23-3110-13	23-3130-09	NO	NO	YES
14	1	OUTER SPRING	23-3110-17	23-3130-08	23-3130-10	NO	NO	YES
15	1	O-RING, RETAINER (FLUOROCARBON)	39-V000-36	39-0510-31	39-V510-43	YES	YES	NO
16	1	RETAINER	81-4000-28	81-4000-29	81-4000-30	NO	NO	NO
N/A	N/A	SEAL KIT (STANDARD)	60-1400-29	60-1400-30	60-1400-21	INCLUDED IN KIT		
N/A	N/A	SEAL KIT (FLUOROCARBON)	6V-1400-29	6V-1400-30	6V-1400-21			
N/A	N/A	SPRING KIT	61-1400-03	61-1400-04	61-1400-05			



Lubricate all seals with clean hydraulic fluid prior to assembly.

PARTS LIST



VEKTEK, INC.
1334 E. SIXTH AVE. P.O. BOX 625
EMPORIA, KS. 66801 U.S.A.

ASSEMBLIES AFFECTED
14-0105-01-L, 14-0105-01-R, 14-0105-01-S
14-0109-01-L, 14-0109-01-R, 14-0109-01-S
14-0113-01-L, 14-0113-01-R, 14-0113-01-S

PARTS LIST, SC, TB, HS, SA

G	5280	RELEASE	ALS	4/12/24
REV	IN ACCORDANCE WITH ECN	EFFECTIVE DATE	REVISED BY	DATE
DRW BY:	KWR	DRAWING STATUS: Released		
DATE:	11/09/04	PRODUCTION APPROVED FOR RELEASED STATUS ONLY		

SIZE
A
PL1414

REV
G

FORM FEG035_PL_ASIZE, REV. B

SHEET 1 OF 1